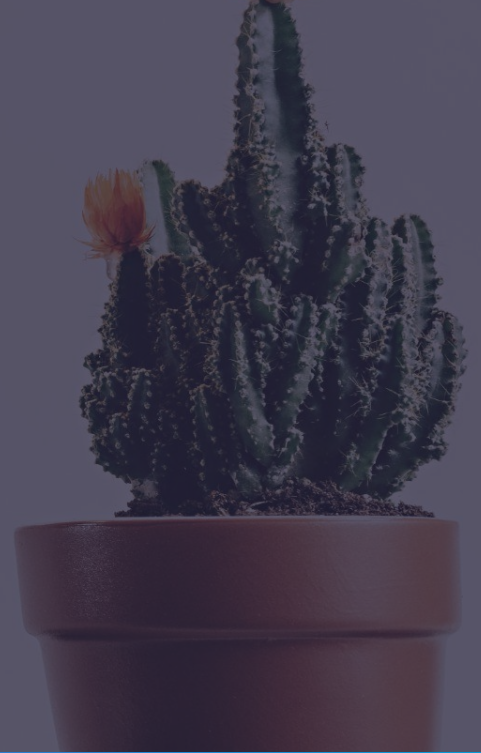


# Ideas to Jobs

---

## CROSSING THE CACTUS Summit

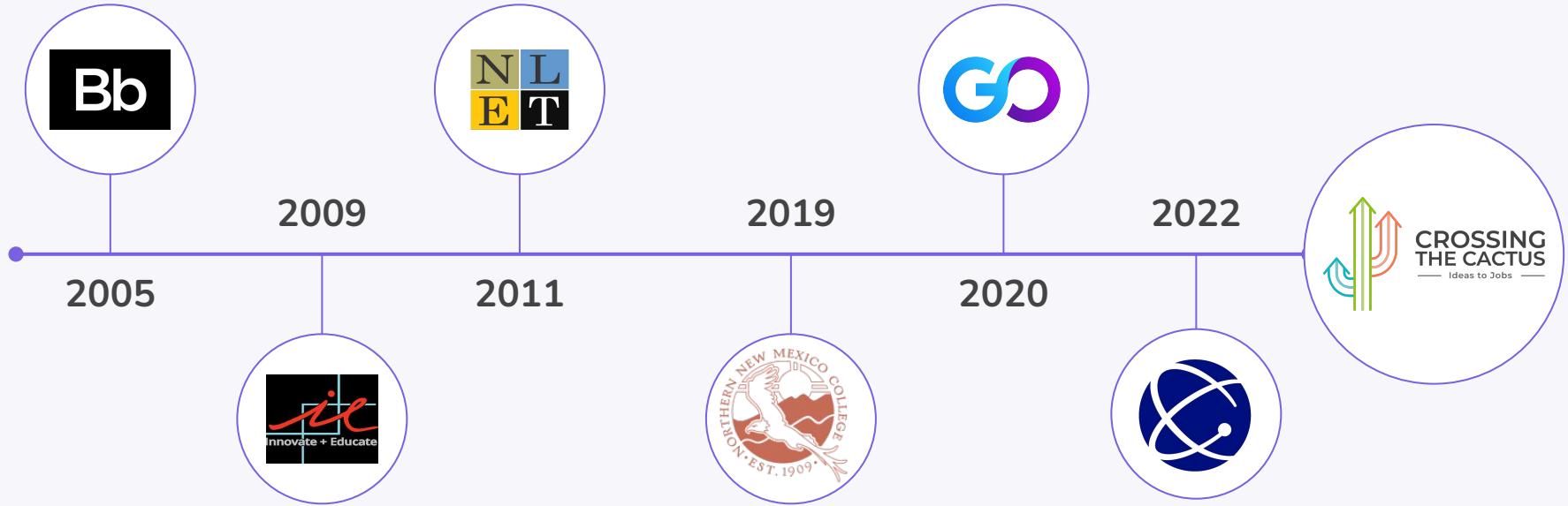


### Ecosystem Marketplace Required

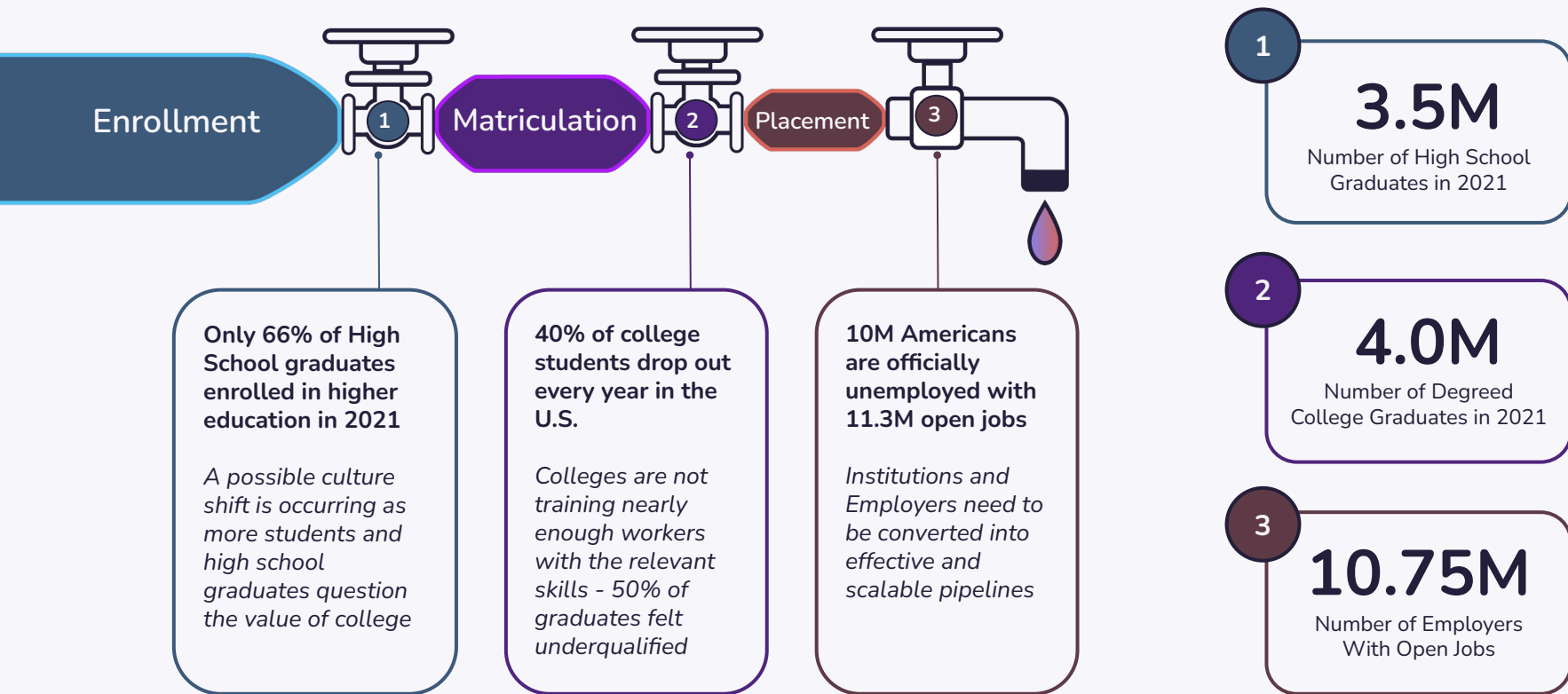
---

Gordon Freedman | President, GoEducatе

# NM Relationships Coming Full-Circle



# Fixing the “Talent Pipeline”



# Disconnected People

---



The diagram consists of three rounded rectangular boxes arranged horizontally. The first box on the left is blue with a light blue border and contains the word 'Students'. The second box in the middle is purple with a purple border and contains the word 'Educators'. The third box on the right is dark red with a dark red border and contains the word 'Employers'. Two parallel diagonal lines, one light blue and one purple, separate the boxes from left to right, indicating a lack of connection between the groups.

Students

Educators

Employers

# Disconnected Artifacts

---

Resume Postings

The diagram consists of three rounded rectangular boxes arranged horizontally. The first box on the left is dark blue with a light blue border and contains the text 'Resume Postings'. The middle box is dark purple with a purple border and contains the text 'Academic Programs'. The third box on the right is dark red with a red border and contains the text 'Job Postings'. Two diagonal light blue lines separate the first box from the second, and the second box from the third, indicating they are disconnected artifacts.

Academic Programs

Job Postings

# Disconnected Web Tools

---



Social  
Media

College  
Websites

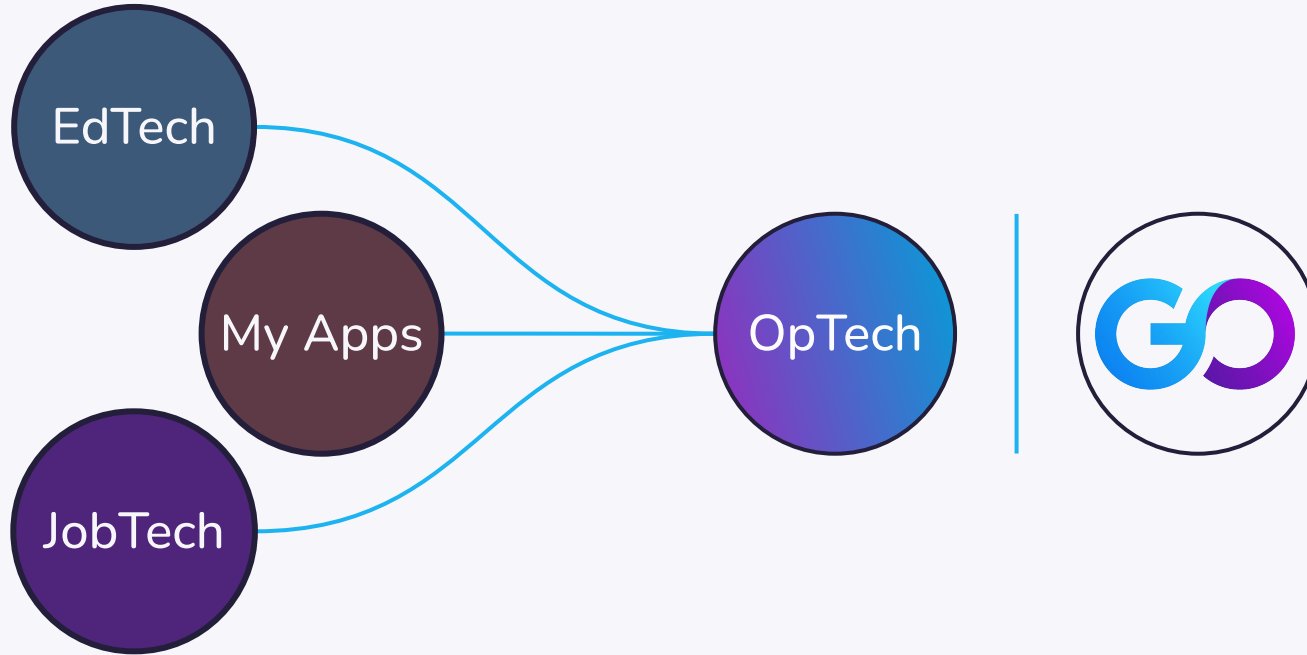
Job Boards  
and Tools

# We “Connect the Dots”

---

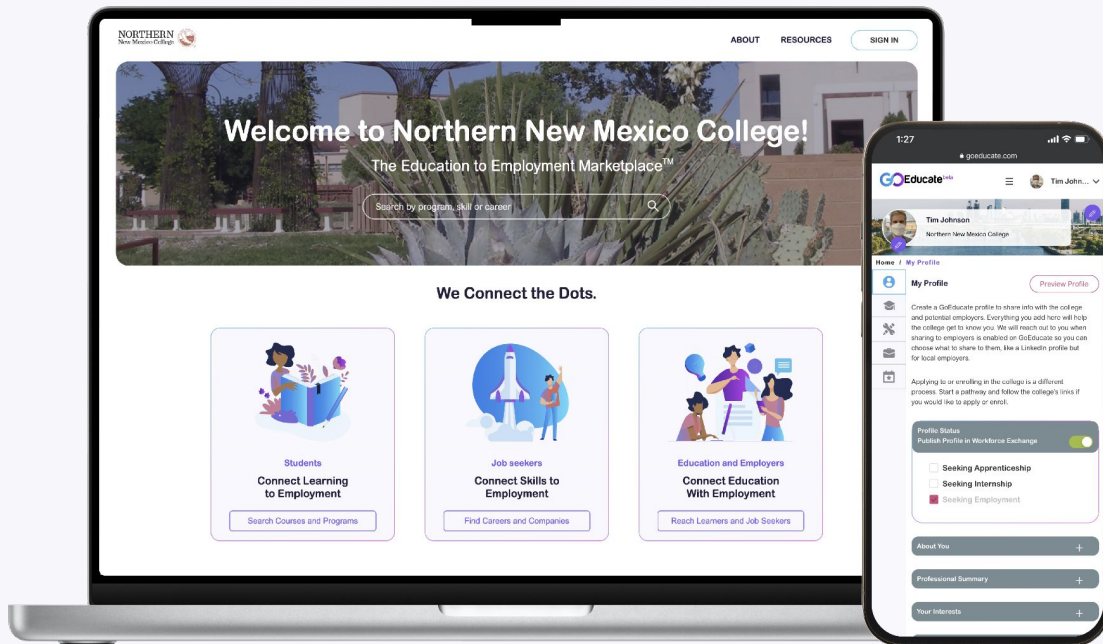


# Introducing “Opportunity Technology”

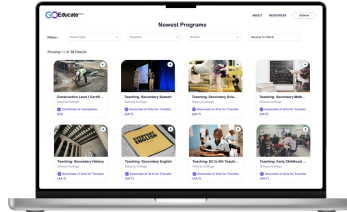




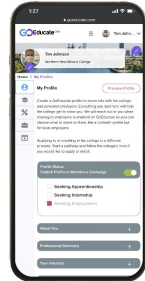
# Powering Opportunity Technology (OpTech)



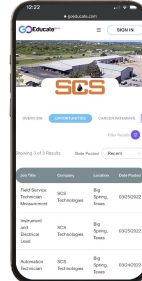
# Creating a “Real-World” Solution



**Smart Pathways**  
Replaces  
Program Listings



**GoEducate Profile**  
Replaces  
Resume Data



**Smart Postings**  
Replaces  
Job Postings

# GoEducate Partners



## Technology Partners



Education Design Lab



## Education Partners



NORTHERN  
New Mexico College



SREB

## Connected Employers



# Contact GoEducate

## **Eric Kmiec | Founder & CEO**

Email: [eric.kmiec@goeducate.com](mailto:eric.kmiec@goeducate.com)

Mobile: 916.337.4528

## **Gordon Freedman | President**

Email: [gordon.freedman@goeducate.com](mailto:gordon.freedman@goeducate.com)

Mobile: 831.224.6161

## **Timothy Johnson | Chief Marketing Officer**

Email: [tim.johnson@goeducate.com](mailto:tim.johnson@goeducate.com)

Mobile: 310.486.5274

### **GoEducate**

1311 Chisholm Trail Suite 403, Round Rock, TX 78681  
email: [tim.johnson@goeducate.com](mailto:tim.johnson@goeducate.com) | website: [goeducate.io](http://goeducate.io)

